



HEAVY DUTY PULLING, JUST GOT A LOT SIMPLER WITH THIS SINGLE DRUM UNIT.

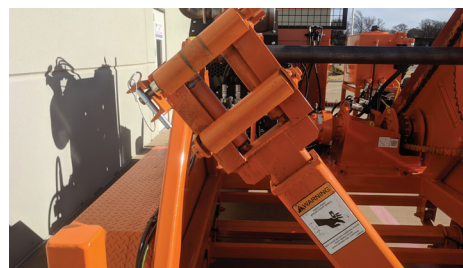


A VERSATILE UNIT THAT CAN BE USED IN A WIDE RANGE OF APPLICATIONS.

This internally pressured compensated closed-loop hydraulic system minimizes heat buildup of fluid while in tension. Setting your desired pulling pressure is now able to be preset.



Reel and spindle assemblies lift straight out without needing to shift to the side. A spring applied, hydraulic pressure safety brake is standard in the main drive line.



FEATURES

CLOSED-LOOP HYDRAULIC SYSTEM

EASY SPINDLE REPLACEMENT

FOR USE IN TRANSMISSION & DISTRIBUTION APPLICATIONS

APPROXIMATE LINE CAPACITY

12,000' 7/8" Synthetic Rope
22,000' 1/2" Dyneema Rope or equivalent on a 48" reel
22,000' 3/8" Steel Rope

40180-18R

T-1DPT-180-FT4 SPECIFICATIONS

STANDARD FEATURES	
Engine	115 hp FT4 diesel
Fuel Capacity	19 gallons
Levelwind	Post type with removable top roller, hydraulically driven
Brakes	Electric with breakaway switch
Tires	215/75R17.5 Load Rating "H"
Axles	Tandem - 10,000 lbs. capacity per
Front Hitch	Adjustable 3" lunette eye
Lighting	DOT regulated (LED)
Jacks	Front manual crank/Rear manual pin
Grounding	Mounted front and rear lugs
Operator Seat	Adjustable with foot rest
Tie Downs	3 1/2" inside diameter ears
Operator Panel	Control cover supplied
UNIT PERFORMANCE (STANDARD PULLING REEL)	
Continuous Torque Rating	180,000 in. lbs.
Line Speed (Average)	0-4 mph
Full Drum Line Pull Rating	6,000 lbs. (standard pulling reel)
	7,500 lbs. (standard pulling reel with Dyneema rope)
STANDARD PULLING REEL	
Diameter	60"
Inside Width	43 1/2"
Core Diameter	20"
Approximate Line Capacity	12,000 7/8" Synthetic Rope
	22,000' 1/2" Dyneema Rope
	22,000' 3/8 Steel Rope
DIMENSIONS & WEIGHT	
L X W X H	21'5" X 8'6" X 8'4"
Net Weight	9,880 lbs.
GVWR	28,880 lbs.
GAWR	19,220 lbs.
Tongue Weight	2,140 lbs.



EQUIPPED LOCATIONS NATIONWIDE

All equipment is available for purchase and rental through our five locations across the USA. We want to be prepared for all of your demands because we are dedicated to helping the industry whenever you need it.

ASSEMBLED IN THE USA

All Wagner-Smith Equipment Co. equipment are assembled in our state-of-the-art facilities in Lawrenceville, IL and Burleson, TX. Replacement parts are quickly fulfilled from our Burleson, TX location and shipped to anywhere in North America.

*Wagner-Smith Equipment Co. reserves the right to change the specification of any unit at any time without prior notice. This spec sheet is only a statement of general specifications on the date of this publication.

To learn more or find a location nearest you,
please visit **WagnerSmith.com**



**Wagner
Smith**
Equipment Co.

40180-18R

REV. 2023